

Report D&C

**Number of OHDEN Checkins by District and County by Month**

Note: data are normalized to 4 net sessions per month

2021		Jan	Feb	Mar	Apr	May	Jun	Jul	Aug	Sep	Oct	Nov	Dec
District	County												
1	Lucus							2	1	0.8			
	Wood												
	Ottawa												
	Erie								1	3.2	2		
	Sandusky												
	Seneca			0.8	1			4	3	3.2	4		
	Huron	2	1						1	5.6	1	1.3	1.6
	Hancock												
	Wyandot												
	Hardin												
2	Williams												
	Fulton												
	Defiance	4	4	4	3			4	4	5.6	4	3.9	4
	Henry												
	Paulding	1		1.6	3			3	3	2.4	3	1.3	4
	Putnam												
	Van Wert												
	Allen												
	Mercer												
Auglaize													
3	Shelby		1	0.8	1								
	Logan												
	Darke	3											4
	Miami	1	1	0.8	1			2	1	2.4	1	1.3	4.8
	Champaign										1		
	Preble	4	3	4	4			2	4	4	3	3.9	3.2
	Montgomery	4	4	3.2	4			4	4	2.4	4	2	4.8
	Clark												
Greene	8	7	10	10			6	5	3.2	5	5.2	6.4	
4	Butler												
	Warren												
	Clinton		1	0.8	3			2	1	3.2	3		0.8
	Hamilton												
	Clermont												
	Brown												
	Highland												
	Adams												
5	Summit												
	Portage	3	4	2.4	2			2	2		2	1.3	3.2
	Trumbull												
	Stark				1					0.8	2	1.3	0.8
	Mahoning							5	4	8	4	7.8	1.6
	Columbiana	6	4		1			3	7	7.2	6	7.8	5.6
Carroll													

Report D&C

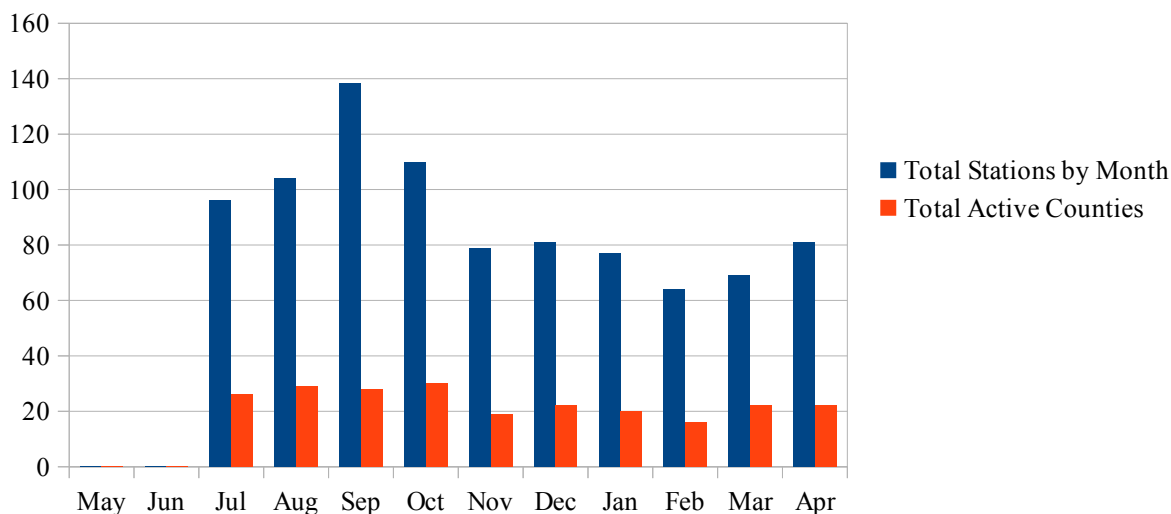
Number of OHDEN Checkins by District and County by Month													
Note: data are normalized to 4 net sessions per month													
2021		Jan	Feb	Mar	Apr	May	Jun	Jul	Aug	Sep	Oct	Nov	Dec
District	County												
6	Crawford												
	Richland			1.6	1			2	4	4.8	1		
	Ashland												
	Wayne												
	Morrow			1.6	3			3	3	4	3	1.3	
	Holms												
7	Marion												
	Knox												
	Union												
	Dalaware	3	4	3.2	4			3	3	4	3	5.2	3.2
	Licking	4	3	4	5			5	3	5.6	8	3.9	0.8
	Madison												
	Franklin			2.4	3			4	5	8	6	3.9	0.8
	Fairfield												
	Fayette												
Pickaway													
8	Ross												
	Hocking												
	Perry												
	Vinton												
	Athens	2	4	2.4	3			4	4	2.4	3		0.8
	Pike							3	3	4	2		
	Jackson												
	Gallia									1.6	1		
	Meigs	7	6	4.8	6			6	5	4	8	6.5	8
	Scioto												
Lawrence													
9	Tuscarawas												
	Harrison												
	Jefferson	6	8	6.4	5			5	4	5.6	5	5.2	8
	Coshocton	4	3	5	9			7	13	16	12	7.8	6.4
	Guernsey												
	Muskingum												
	Belmont												
	Morgan												
	Noble	2		0.8					1	4	1		
	Monroe			0.8	1			2	2	0.8	3		
Washington	2						2	3	2.4	1		4	
10	Lorain	2						3	4	2.4			
	Medina									0.8			
	Cuyahoga	3		0.8				4	3	5.6	3	3.9	2.4
	Lake												
	Geauga												
Ashtabula													
n/a	Outside Stations	2	4	4	4			4	2	3.2	3	3.9	0.8

Report D&C

Number of OHDEN Checkins by District and County by Month													
Note: data are normalized to 4 net sessions per month													
2021		Jan	Feb	Mar	Apr	May	Jun	Jul	Aug	Sep	Oct	Nov	Dec
District	County												
n/a	Outside Misc.	4	2	3	3				1	7.2	2		0.8
	<b>Total by Month</b>	77	64	69.2	81			96	104	138.4	110	78.7	80.8
	<b>Total Active Co. (&gt;= once / mo.)</b>	20	16	22	22			26	29	28	30	19	22
Note: Outside Stations are those outside Ohio but actively involved with OHDEN.													
Outside Misc. are those outside Ohio that may occasionally check in.													

Total Stations and Active Counties

by Rolling Month



April has shown a continued increase in total participation since the time/band change but far below the peak of fall 2020. Total county participation remains largely flat at around 20 counties.

OHDEN conducted a pair of training Zoom Meeting session for introductory FLMSG in preparation for NVIS Day (see ARESConnect). There were 14 participants including atypical OHDEN stations. Our current training philosophy of mentor based with EC leadership may need rethinking.

OHDEN participated in NVIS Day as a net expanding the Section goals by operating over a 12-hour day and gauging the quality of NVIS propagation by success of passing a FLMSG message. For OHDEN, as a system that includes radio operators needing to perform in an EOC environment, we included practice at generating concise and accurate content of an ICS-213 from somewhat ambiguous instruction. Mid-day NVIS propagation was poor on some bands and we had to resort to longer propagation modes using the OHDEN affiliate station in North Carolina. OHDEN net management is still collecting data from NVIS Day.